



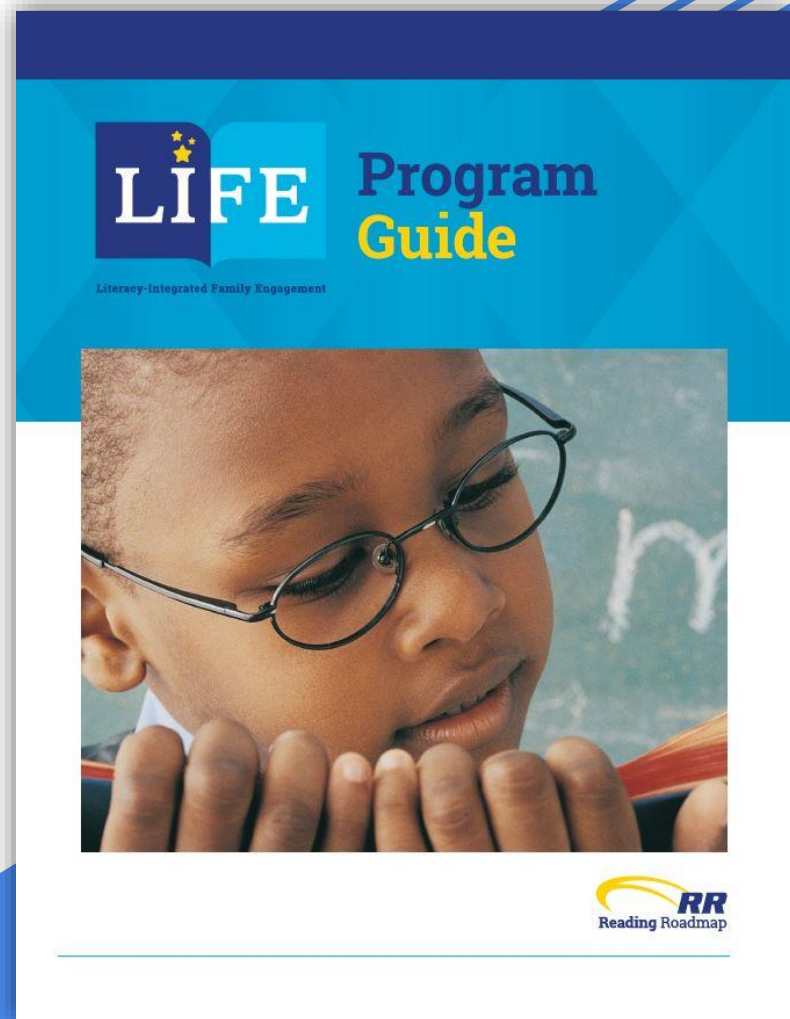
## LITERACY INTEGRATED FAMILY ENGAGEMENT

## RESEARCH-BASED FAMILY ENGAGEMENT

LIFE is in line with the Department of Education's Partnership in Education report of dual capacity building a framework for Family-School Partnerships. In order to be in line with best practices, family engagement programs must be linked to learning and be relational, developmental, collaborative, and interactive. Using the kind of Two-Generation Approach promoted by the Aspen Institute LIFE draws on cutting edge research for both literacy and emotional intelligence to create a robust learning experience for both children and families.

## WHAT IS LIFE?

Reading Roadmap's Literacy-Integrated Family Engagement program, or LIFE, is a key component of our overall strategy for improving literacy for children grades Pre/K-4. LIFE is designed to bring families together with schools to create supportive connections that will deepen children's relationships with their parents and enhance their literacy skills. Families that are connected to schools and to a community of other parents are more likely to reach out to their child's school and to each other for support.



# LIFE

Literacy-Integrated Family Engagement

- Designed for 8 Families, per session
- 8 week Program, 1 night per week
- 2 hr sessions
- Activities include: Meal-time, Attuned Listening, Child-Led Play, Parent Group, Recreation time, Team Building, Gratitude, and Family Gifts.

## Each LIFE Curriculum Box Set Includes:



### 4 LIFE Guide Books

The guide book provides step-by-step instructions on how to run a successful LIFE program. The guide book also includes scheduling tips, detailed scripts for coordinators, the science behind each LIFE activity, and helpful planning tips for each activity.

### 25 LIFE Summary Handouts

These handouts provide an outline of each LIFE session, along with suggested timing for each activity to meet fidelity guidelines.

### 2 Parent Workbooks (English and Spanish versions)

The Parent Workbook provides an eight-week layout of the course with explicit guidelines, scripts, and weekly worksheets to track activities at home. This tool helps engage parents through the eight week course and reinforces the parents' understanding of each activity.

### 25 Parent Read Aloud Guidelines

This colorful handout provides helpful hints to assist families through an effective Family Read Aloud. Following these guidelines will ensure families get the most out of their reading time at home and help their children develop crucial reading strategies needed for success in the classroom and beyond.

### 25 Affirmation Sheets

This worksheet is a tool for the LIFE team to use to record positive affirmations for each family throughout the eight-week program.

### 25 Body Mapping Worksheets

Families will use these worksheets to talk about emotions during Attuned Listening sessions. Each worksheet provides clear directions for the activity along with a visual aid to help identify where each emotion is felt throughout the body.

### 25 LIFE App Instructions

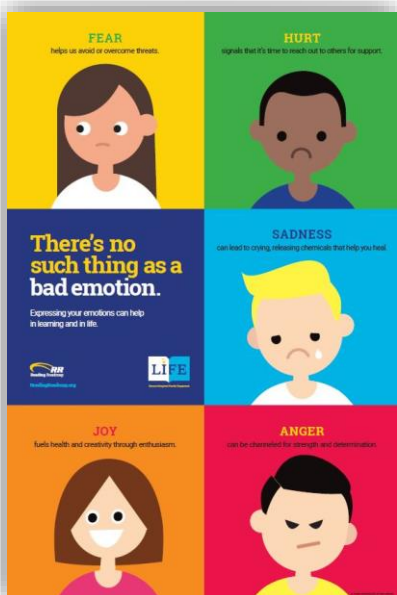
The Reading Roadmap provides a free application with purchase of the curriculum. This guide provides step-by-step instructions to download the app and have access to the LIFE Dashboard.

### 3 Emotion Posters (English and Spanish versions)

Colorful full-size posters provide a visual aid and are used when teaching about the emotions.

### 1 Fidelity Tracker

This tool is used by the LIFE team as a rubric to score their sessions each night. This allows teams to meet fidelity and provide the best program for their families.



Website:  
[www.readingroadmap.org](http://www.readingroadmap.org)



Contact:  
203-570-7560



Email:  
[info@readingroadmap.org](mailto:info@readingroadmap.org)